

## Self-Build COVID Pod Instructions

Minimum of 2-3 people required depending on the number of pods in each row



Make one complete pod using 3 individual walls plus a return privacy wall if ordered. Depending on what you have ordered, this may be 3 plain white walls or 2 plain white walls and 1 wall with a Perspex window and hatch. The 3 walls will be connected in a U shape configuration.

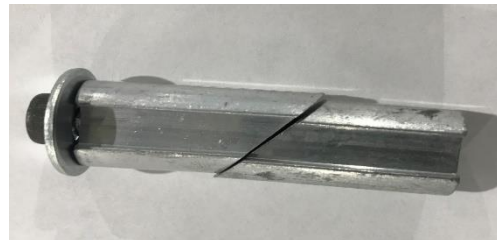
The infill wall panels will arrive with protective film on. We would recommend leaving this in place until the pods are fully constructed to avoid marking the walls during construction.

To start you will need 1 x roll nut and screw, 1 x parallel connector 1 x side wall and 1 x front wall, and (see images below)

Roll nut and screw



Parallel connector



Side and front wall



1. Stand **one front wall** up (with someone holding it up). Take **1 roll nut and screw** and push the roll nut up inside the channel at the bottom of the post (one roll nut in the outside channel of each post) as shown in 'Video-1-bottom-post'.

Watch Video 1 now <https://www.youtube.com/watch?v=0HiiOITNYpY>



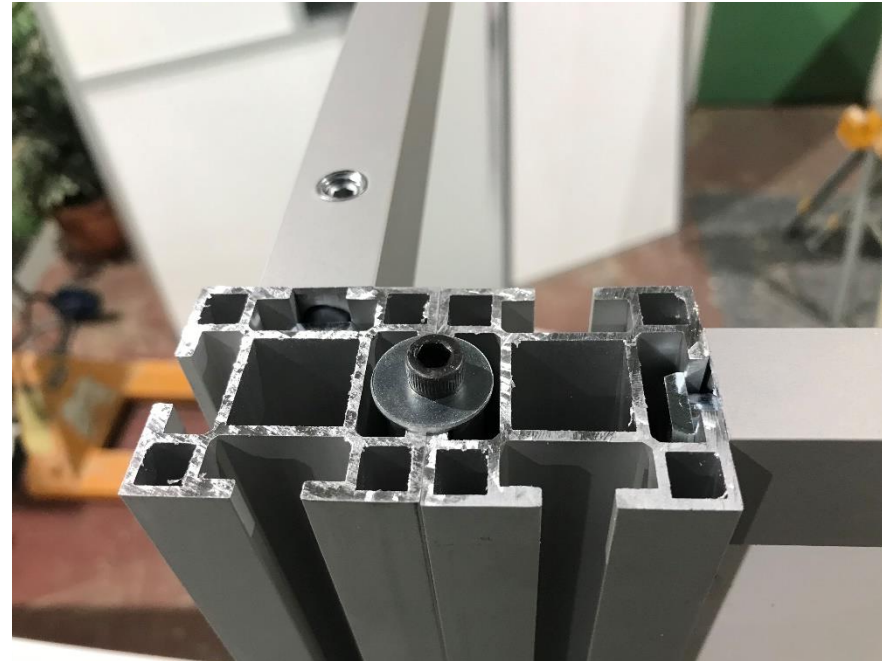
2. The second person now takes the **side wall** and lowers it (using the channel in the posts) onto the screw that is now sticking out at the bottom of the **front wall** post.

3. Using a step ladder, take the **parallel connector (x1)** and position it inside the top of the posts in each corner (where the front wall and side walls meet) using the channel. Once in position tighten the parallel connector using the Allen Key supplied.

**Watch 'Video-2-top-post' for how to use the parallel connector. <https://www.youtube.com/watch?v=2nf2VMLtIhE>**



View of the front and side walls connected in a 90° angle

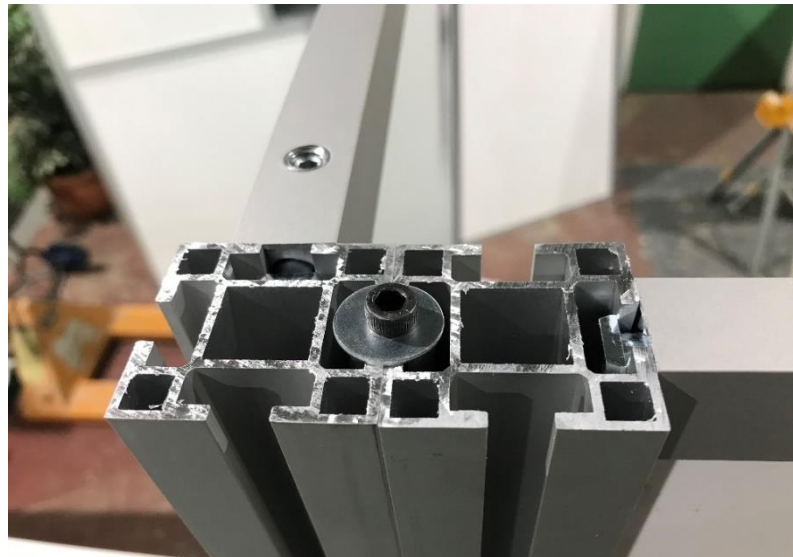


Top view of the two posts connected in the corner

4. Repeat this process until all pods are connected.

**Useful Tip: The roll nut needs to be inserted up inside the channel via the bottom of each post. As the run of pods increases it becomes very heavy and difficult to insert this roll nut once the posts are upright. Therefore, inserting the roll nut before you lift the panel into an upright position is much easier.**

5. If you have ordered a return privacy wall, you will connect it now. If you have not ordered a return privacy wall, please go to step 6. The return privacy wall can be connected to either side of the pod. To connect the return privacy wall insert the roll nut in the channel in the bottom of the post (on the chosen side wall). Lower the privacy return wall onto the screw that will now be sticking out of the side wall post. Line up the return privacy wall to the post and as before, insert the parallel connector in the channels at the top of the post – connecting the privacy return wall to the pod side wall. Tighten the screw with the Allen key to secure the connection.



6. The bracing bar looks like this (see photos and arrows below). The bracing bar will have a connecting clamp already in each end and you simply slide it down into the channel on each side, at the entrance to your pod. If you have a return privacy wall the bracing bar will bridge the gap between the end of the return privacy wall and the pod side wall. If you do not have a return privacy wall the bracing bar will bridge the entire entrance side of the pod. Once in position tighten the screws with the Allen key. See images below.



The bracing bar slides into the channels on each side to tie the pod together.



**6. If you get stuck please do not hesitate to call us on 01733 570222.**