

Set Up Instructions

WLTST

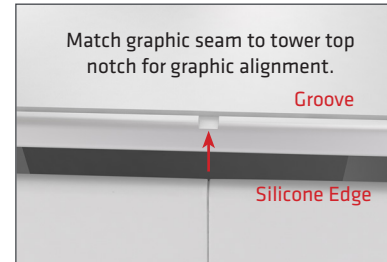
Step 1: Open bag and make sure inflate valve is facing up.



Step 2: Connect air pump to valve. While holding the top of tower board, pump up the inner core to about 80% capacity. Remove air pump.



Step 3: Graphic install. Match the seam of graphic with the notch in the top counter top. Push silicone edge of graphic into the groove



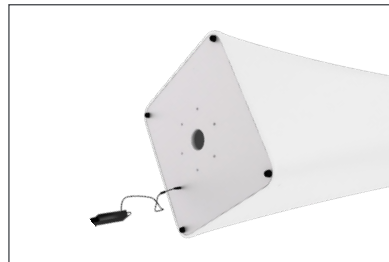
on top of the counter board until securely fastened all around.
Step 4: Repeat this process to install graphic on bottom of tower.



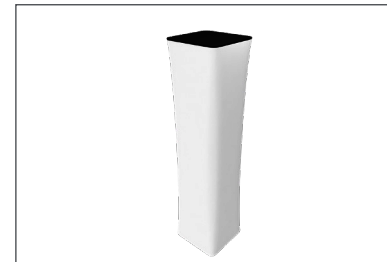
Step 5: Insert air pump and pump inner core until fabric graphic is tight. Note: Do not leave unattended and overfill.



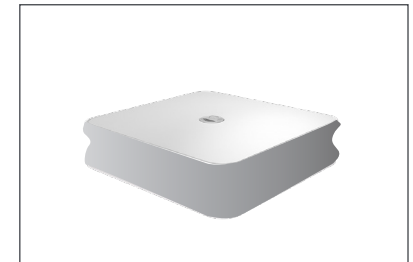
Step 6: Connect Power Supply or optional Rechargeable Lithium-Ion Battery.



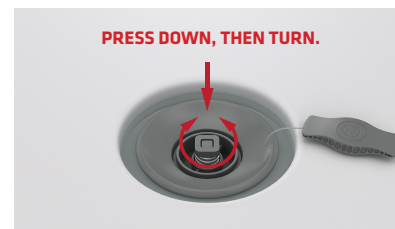
Step 7: Complete.
(if using the power cord, plug into outlet to light tower.)



Step 8: Repacking. Deflate the tower and leave the fabric graphic attached to the tower.



WARNING: To avoid breaking or damaging the top or bottom edge groove of your display, lower gently onto ground when assembling and disassembling. Do not drop tower or tip over any time.



AIR LOSS THROUGH VALVE: The most common reason for loss of air is the valve has not been properly closed or was accidentally opened with the pump nozzle during inflation. To close air valve press down on valve and turn left or right to closed position. To open air valve and deflate the counter, press down on valve and hold. To keep open, press down and turn valve left or right to open position.